

NX MET

2021

2021

2021

2021

2021

2021

2021

2021

2021



CUTTING

MOUNTING

POLISHING

CLEANING

MICROSCOPY

CONSUMABLES

MMETALLOGRAPHY

2021 v1

page

CUTTING

Resinoid cutting discs	4
Antirust liquid	4
Diamond cutting discs	5

MOUNTING

Cold mounting resins	6
Accessories (moulds)	6
New Accessories	7
Hot mounting resins NEW EPOXY Not sticky !	8
Storage Box NEW	7

GRINDING

Special discs	9
Non-Adhesive SIC abrasive papers	10
Adhesive abrasive papers Grit P2500 & new Ø400mm	11
Grinding wheels (NEW SiC) & diamond grinding discs	12
Diamond grinding discs (resinoid bond)	13

POLISHING

Diamond Suspensions New 0,5µ POLY	16 to 19
Diamond Sprays New packaging 200ml	20
Water-free diamond suspensions	20
Diamond liquid Alcohol base	21
Diamond Pastes	22
Polishing Lubricants	22
Polishing Cloths	23

SUPERFINISHING

Colloidal Silica Suspension	24
Alumina Powder	24
Alumina Suspensions NEW smooth suspension	24
Alumina Cream NEW	24

MISCELLANEOUS

Portable polishing unit	25
Consumables for Replica	25
Ultrasonic cleaning tank	25
Hardness Blocks & accessories NEW	26

NX MET : quality, competitive prices, quick deliveries, ...

More than 30 years of experience for our customers!

You will find our standard products in this catalogue as well as new consumables to help to improve materials preparation.

For any product or equipment not included in this catalogue, don't hesitate to ask for.



NX-MET

**12 Allée Pin de St Clair
38320 Echirolles**

Tél: +33 438 49 28 33

Fax: +33 438 49 27 85

Mail: info@nxmet.com

General terms:

- Prices are ex.VAT, and subject to change without notice.
- SD Price are Net Distributors Prices.
- Delivery: FCA Echirolles (Incoterms 2020)
- Payment: 30 days Net, from date of Invoice
- VAT N° FR85 519 113 534

Depending quantity and references, extra-discount possible, ask for quotation!!

NX MET , eco-citizen company !

**We recycle all packaging that we receive, all papers,
flyers, catalogs are crushed and serve for our shipments.**

Objective: "Zéro-waste" !



NX20: New abrasive Quality ! Increased Performances



Standard Resinoid Cutting Discs, Box of 10

Ref	Ømm	Abrasive	Applications	Ref.N°	GW (kg)
NX10	250x1,6x32	Al2O3	Standard Steels	10250115	2,0
NX20	250x1,6x32	Al2O3	Hard & medium Steels High Performance Abrasive	10250120	2,0
NX30	250x1,6x32	Al2O3	Very Hard Steels	10250130	2,0
NX70	250x1,6x32	SiC	Non Ferrous, Cast Iron, Titanium	10250170	2,0
NX10	300x2x32	Al2O3	Standard Steels	10300110	3,3
NX20	300x2x32	Al2O3	Hard & medium Steels High Performance Abrasive	10300120	3,3
NX30	300x2x32	Al2O3	Very Hard Steels	10300130	3,3
NX30	400x3x32	Al2O3	Very Hard Steels	10400130	8,4

Other diameter under request (200mm, 230mm, 350mm, ...)

NEW

NEW

NEW QUALITY !

Resinoid Ultrafine Cutting Discs, Box of 10



Ref	Ømm	Abrasive	Applications	Ref.N°	GW (kg)
NX80	100x0,5x12,7	SiC	Fragile materials, Resinoid bond for micro-cutting	10100210	0,3
NX80	125x0,5x12,7	SiC	Fragile materials, Resinoid bond for micro-cutting	10125210	0,3
NX80	150x0,5x12,7	SiC	Fragile materials, Resinoid bond for micro-cutting	10150210	0,4
NX80	180x0,5x25,4	SiC	Fragile materials, Resinoid bond for micro-cutting	10180210	0,5

Other diameter and special abrasive under request

NEW

NEW

NEW

NEW

Cooling anti-rust liquid for all Cutting and Dressing Machines



Ref	Quantity	Mix	Applications	Ref.N°	GW (kg)
XAR4	1L	4%	Cooling & Anti-oxydation	15001100	1,1
XAR4	2,5L	4%	Cooling & Anti-oxydation	15025100	2,7
XAR4	5L	4%	Cooling & Anti-oxydation	15050100	5,2
XAR4	10L	4%	Cooling & Anti-oxydation	15100100	10,3
XAS2	0,5L	0,20%	Anti-septic	15005110	0,6

Cutting fluid for micro-cutting machines (diamond & CBN discs)



Ref	Quantity	Mix	Applications	Ref.N°	GW (kg)
XACF	1L	4%	Anti-oxydation & lubrication	15001120	1,1
XACF	2,5L	4%	Anti-oxydation & lubrication	15025120	2,7
XACF	5L	4%	Anti-oxydation & lubrication	15050120	5,2
XACF	10L	4%	Anti-oxydation & lubrication	15100120	10,3

High Quality Diamond Discs

.Special High Quality Bond for better cutting



Diamond Cutting discs, Metal Bond, box of 1

Ref	Ømm	Abrasive	Applications	Ref.N°	GW (kg)
XDLM	76x0,2x12,7	Diamond	Ceramic, Glass, Stone	12075100	0,1
XDLM	100x0,5x12,7	Diamond	Ceramic, Glass, Stone	12100100	0,1
XDLM	125x0,5x12,7	Diamond	Ceramic, Glass, Stone	12125100	0,1
XDLM	150x0,6x12,7	Diamond	Ceramic, Glass, Stone	12150100	0,2
XDLM	178x0,7x12,7	Diamond	Ceramic, Glass, Stone	12175100	0,3
XDLM	200x0,9x32	Diamond	Ceramic, Glass, Stone	12200100	0,4
XDLM	250x1,2x32	Diamond	Ceramic, Glass, Stone	12250100	0,6
XDLM	300x1,4x32	Diamond	Ceramic, Glass, Stone	12300100	1,0
Other reference under request					

NEW

Diamond Cutting discs, Resin Bond, box of 1

Ref	Ømm	Abrasive	Applications	Ref.N°	GW (kg)
XDLR	100x0,5x12,7	Diamond	Carbides, Hard Materials	12100120	0,1
XDLR	125x0,5x12,7	Diamond	Carbides, Hard Materials	12125120	0,1
XDLR	150x0,6x12,7	Diamond	Carbides, Hard Materials	12150120	0,2
XDLR	178x0,7x12,7	Diamond	Carbides, Hard Materials	12175120	0,3
XDLR	200x0,9x32	Diamond	Carbides, Hard Materials	12200120	0,4
XDLR	250x1,2x32	Diamond	Carbides, Hard Materials	12250120	0,6
XDLR	300x1,4x32	Diamond	Carbides, Hard Materials	12300120	1,0
Other reference under request					

CBN Cutting discs, Resin bond, Box of 1

Ref	Ømm	Abrasive	Applications	Ref.N°	GW (kg)
XCBN	100x0,5x12,7	CBN	Hard & very hard steels	12100130	0,1
XCBN	125x0,5x12,7	CBN	Hard & very hard steels	12125130	0,1
XCBN	150x0,6x12,7	CBN	Hard & very hard steels	12150130	0,2
XCBN	178x0,7x12,7	CBN	Hard & very hard steels	12175130	0,3
XCBN	200x0,9x32	CBN	Hard & very hard steels	12200130	0,4
XCBN	250x1,2x32	CBN	Hard & very hard steels	12250130	0,6
XCBN	300x1,4x32	CBN	Hard & very hard steels	12300130	1,0
Other reference under request					



Dressing stone for Diamond cutting discs, box of 1 (very high quality)

Ref	mm	Abrasif	Applications	Ref.N°	GW (kg)
XDMR	50x25x200	Al2O3	For metal and resin bond disc	12900100	0,5



Cold Mounting Resins

Ref	Time	Quantity	Applications	Ref.N°	GW (kg)
XF10	10min.	<u>Powder 1Kg</u>	ACRYLIC Translucent Clear when use with pressure chamber (NXPV) High Quality	25001110	1,1
XF10		<u>Powder 10Kg</u>		25010110	10,8
XF10		<u>Liquid 0,5L</u>		25001210	0,7
XF10		<u>Liquid 1L</u>		25002210	1,2
XF10		<u>Liquid 5L</u>		25005210	5,4
XF15	8min.	<u>Powder 1Kg</u>	ACRYLIC Green Hard Filled resin High Quality	25001115	1,1
XF15		<u>Powder 10Kg</u>		25010115	10,8
XF15		<u>Liquid 0,5L</u>		25001215	0,7
XF15		<u>Liquid 1L</u>		25002215	1,2
XF15		<u>Liquid 5L</u>		25005215	5,4
XF25	12 min.	<u>Powder 1kg</u>	ACRYLIC Blue Hard Filled resin Very High Quality	25001125	1,1
XF25		<u>Powder 10Kg</u>		25010125	10,8
XF25		<u>Liquid 0,5L</u>		25001225	0,7
XF25		<u>Liquid 1L</u>		25002225	1,2
XF25		<u>Liquid 5L</u>		25005225	5,4
XF12	8min.	<u>Powder 1Kg</u>	NEW ACRYLIC Green Dissolving in acetone	25001112	1,1
XF12		<u>Liquid 0,5L</u>		25001212	0,7
XF40	10-12H @ 25°C	<u>Liquid 1L</u>	EPOXY HQ , Highly Transparent Hardener for XF40 (120ml for 1L)	25001140	1,1
XH40		<u>250ml</u>		25001240	0,3
XF60	2H @ 25°C	1Kg+30g	POLYESTER , Transparent	25001160	1,2
XF70	20 min.	<u>Powder 1kg</u>	Acrylic Carbon conductive	25001170	1,2
XF70		<u>Liquid 1L</u>		25001270	1,2

**NEW
NEW**

New Silicon moulds Ø80 & 100mm.
Silicon moulds also available in Transparent Silicon
for UV mounting: 1 component, 60 secondes, Clear !!



Accessories for cold mounting

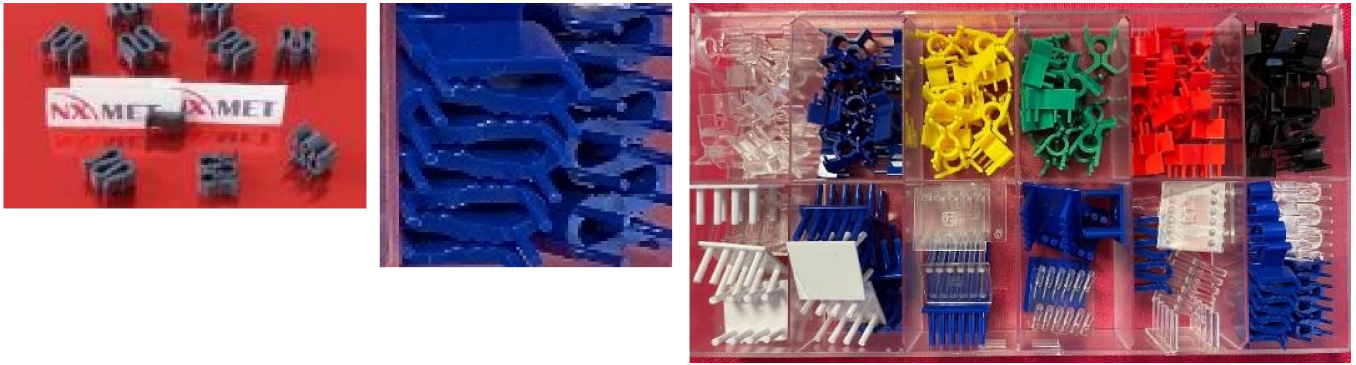
Ref	Ømm x H mm	Quantity	Applications	Ref.N°	GW (kg)
XSIL	Ø25 x23	Box of 5	High Quality Silicon mould	27025105	0,2
XSIL	Ø30 x25	Box of 5	High Quality Silicon mould	27030105	0,2
XSIL	Ø40 x30	Box of 5	High Quality Silicon mould	27040105	0,2
XSIL	Ø50 x30	Box of 3	High Quality Silicon mould	27050103	0,2
XSIL	Ø60 x35	Box of 3	High Quality Silicon mould	27060103	0,2
XSIL	Ø80x35	Box of 3	High Quality Silicon mould	27080103	0,3
XSIL	Ø100x35	Box of 3	High Quality Silicon mould	27100103	0,3
XSIL	55x30x22	Box of 3	High Quality Silicon mould	27065103	0,3
XSIL	70x40x22	Box of 3	High Quality Silicon mould	27070103	0,3
XSIL	100x50x22	Box of 3	High Quality Silicon mould	27075103	0,4
XTEF	Ø25x25mm	Box of 5	New HIGH QUALITY TEFLON mould	27025305	0,3
XTEF	Ø30x25mm	Box of 5	New HIGH QUALITY TEFLON mould	27030305	0,3
XTEF	Ø40x29mm	Box of 5	New HIGH QUALITY TEFLON mould	27040305	0,4
XPOL	Ø25 x 27	Box of 5	Polypropylene mould	27025205	0,1
XPOL	Ø30 x 27	Box of 5	Polypropylene mould	27030205	0,2
XPOL	Ø40 x 27	Box of 5	Polypropylene mould	27040205	0,2
XGOB	Recyclable	Box of 100	Cardboard cups + 100 wooden stirrers + 1 spoon	27600100	0,2



**NEW
NEW**

**NEW
NEW**

**NEW
NEW**



Ref	Quantity	Applications	Ref.N°	GW (kg)
XLIP Plastic clip	Box of 100	Red plastic clip	27500100	0,1
XLIP Plastic clip	Box of 100	Mixed colour plastic clip (Green, Black, Blue, Red)	27500101	0,1
XLIP Clip TRIOCLIP	Box of 100	Plastic clip with 3 tracks	27500105	0,1
XLIP Clip SIXCLIP	Box of 100	NEW Plastic clip with 6 tracks	27500106	0,1
XLIP Metallic clip	Box of 100	Stainless steel clip	27500510	0,1
XLIP Plastic Clip	Box of 120	Choice of different Plastic Clips	27500110	0,2



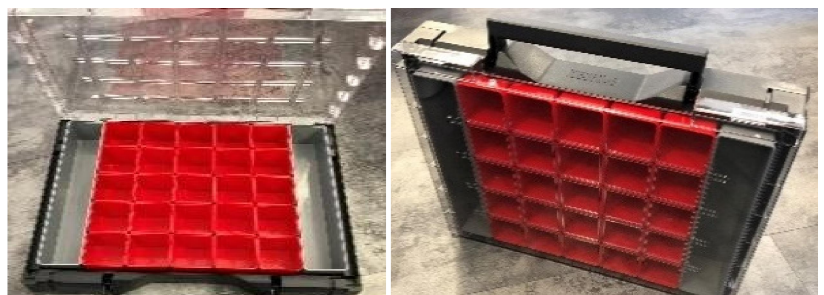
XGLU Crystalbond	100g	Wax temperature 85-110°C	27100110	0,1	NEW
XDYE Dye for Epoxy	50g	BLUE dye for Epoxy XF40 (5%)	25100105	0,1	NEW
XDYE Dye for Epoxy	50g	RED dye for Epoxy XF40 (5%)	25100106	0,1	NEW
XDYE Dye for Epoxy	50g	Fluorescent YELLOW for Epoxy (1à2%)	25100109	0,1	NEW
XWIP Lingettes	Boîte de 100	Nettoyage des surfaces polies 32x34cm	27700500	0,3	NEW
XAIR	530ml	Compressed air, 100% ozone safe, 530ml	27600570	0,6	
NXPV Pressure pot	1 Unit	Pressure vessel for cold mounting	27900100	1,5	
XBAL Balance	1 unit	Kern Precision Balance 500g, 0,1g NEW	27600200	0,7	



XPRES Press	1	Manual press for microscope	27600300	0,8	NEW
XPRES Microscope pad	Box of 5	Anodized pad 76x26mm, Thick.2mm	27600310	0,2	NEW
XPLA Plasticine	1kg	Plasticine for sample fixation	27600315	1,1	NEW
XPLA Joseph paper	1000	Protection paper for polished samples	27600318	0,2	NEW

XBOX Storage box with 27 removable boxes and transparent cover.

Square box: 46x46xH59mm
 Sizes 400x300mm, H70mm



XBOX	NEW	Storage box for samples (25 square boxes + 2 longs)	85500100	0,8	NEW
------	------------	-----------------------------------------------------	----------	-----	------------

We now pack 20kg in a plastic bucket to improve handling, and nicer packaging.
NEW EPOXY, not sticky to the mould !!



Hot Mounting Resins

Ref	Quantity	Color	Applications	Ref.N°	GW (kg)	
XPHB	2,5kg	Black	Phenolic, NEW QUALITY lightly filled with glass fiber	20025100	2,7	
XPHB	10kg	Black	Phenolic, NEW QUALITY lightly filled with glass fiber	20100100	10,5	
XPHB	20kg Plastic Bucket	Black	Phenolic, NEW QUALITY lightly filled with glass fiber	20200100	25,8	NEW
XPHG	2,5kg	Green	Phenolic, Standard mounting	20025110	2,7	
XPHG	10kg	Green	Phenolic, Standard mounting	20100110	10,5	
XPHG	20kg Plastic Bucket	Green	Phenolic, Standard mounting	20200110	25,8	NEW
XPHR	2,5kg	Red	Phenolic, Standard mounting	20025120	2,7	
XPHR	10kg	Red	Phenolic, Standard mounting	20100120	10,5	
XPHR	20kg Plastic Bucket	Red	Phenolic, Standard mounting	20200120	25,8	NEW
XGFB	1kg	Black	Phenolic, Glass Fiber	20001126	1,1	
XGFB	2,5kg	Black	Phenolic, Glass Fiber	20025126	2,7	
XGFB	10kg	Black	Phenolic, Glass Fiber	20100126	10,5	
XPHC	1kg	Black	Carbon Conductive Phenolic	20001130	1,1	
XPHC	2,5kg	Black	Carbon Conductive Phenolic	20025130	2,7	
XDPB	1kg	Blue	Diallylphtalate Glass Fiber for high quality mounting	20001150	1,1	
XDPB	2,5kg	Blue	Diallylphtalate Glass Fiber for high quality mounting	20025150	2,7	
XDPB	10kg	Blue	Diallylphtalate Glass Fiber for high quality mounting	20100150	10,5	
XACT	1kg	Clear	Acrylic Transparent	20001160	1,1	
XACT	2,5kg	Clear	Acrylic Transparent	20025160	2,7	
XACT	10kg	Clear	Acrylic Transparent	20100160	10,1	
XACC	2kg	Brown	Conductive Acrylic Copper	20020162	2,3	
XEPB	1kg	Black	NEW Epoxy HQ (High Quality, Not Sticky)	20001170	1,1	NEW
XEPB	2,5kg	Black	NEW Epoxy HQ (High Quality, Not Sticky)	20025170	2,7	NEW
XEPB	10kg	Black	NEW Epoxy HQ (High Quality, Not Sticky)	20100170	10,5	NEW
XEPB	15kg	Black	NEW Epoxy HQ (High Quality, Not Sticky)	20150170	15,5	NEW
XEPB	20kg Plastic Bucket	Black	NEW Epoxy HQ (High Quality, Not Sticky)	20250170	25,8	NEW
XJET	400ml		SIL-FOOD spray, mould release agent	27600900	0,5	NEW



XGRA	ENGRAVER delivered with 1 Carbide tip and 1 diamond tip. 230V.	85500050	0,5
XGRA	Pack of 2 Carbide tip	85500052	0,1
XGRA	Pack of 1 Diamond tip	85500053	0,1

XMAF

With our high quality products, simplify and speed up your samples preparation by using **XMAF** system. Only 1 polishing plate is necessary. Stick on polishing plate our **XMAF**, and then you can use all types of consumables without problem of magnetic way.

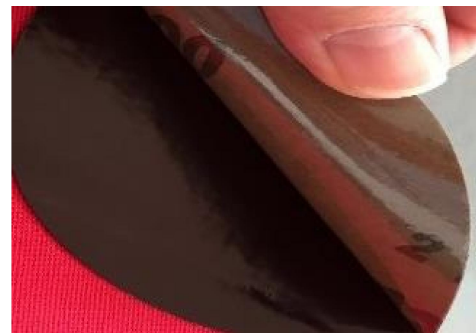
Apply directly on **XMAF** our polishing cloths series M, grinding pads **XTOP**, **XMID-XMIF** and abrasive papers **XPAC**, specially designed for **XMAF**.

or all others adhesive products like polishing cloths series X, standard diamond pads, ... by using intermediate metallic foil **XPSA**.

From time to time clean **XMAF** with water! Easy and less expensive!

New XMAF: the highest sticking power on the market !

XMAF is also available on metallic foil to be use on magnetic plate.



XMAF & XMAF M Electrostatic pad, Box of 1

Ref	Ømm	Back	Applications	Ref.N°	GW (kg)	
XMAF	200	PSA	For XPAC	34905200	0,3	NEW
XMAF	250	PSA	For XPAC	34905250	0,3	NEW
XMAF	300	PSA	For XPAC	34905300	0,5	NEW
XMAF M	200	Metallic	For XPAC	34906200	0,4	NEW
XMAF M	250	Metallic	For XPAC	34906250	0,4	NEW
XMAF M	300	Metallic	For XPAC	34906300	0,6	NEW

XMAG Magnetic disc to stick on polishing machine, Pck of 1



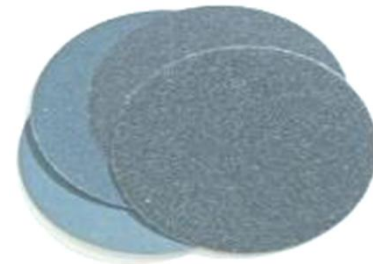
Ref	Ømm	Quality	Applications	Ref.N°	GW (kg)
XMAG	200	High Quality	to stick on polishing plate to use magnetic	34900200	0,3
XMAG	250	High Quality	to stick on polishing plate to use magnetic	34900250	0,3
XMAG	300	High Quality	to stick on polishing plate to use magnetic	34900300	0,4



XPSA Metallic disc to use adhesive on magnetic, Pck of 1

Ref	Ømm	Quality	Applications	Ref.N°	GW (kg)
XPSA	200	High Quality	to stick adhesive pads to use on magnetic	34910200	0,2
XPSA	250	High Quality	to stick adhesive pads to use on magnetic	34910250	0,3
XPSA	300	High Quality	to stick adhesive pads to use on magnetic	34910300	0,4

High Quality abrasive papers.
N°1 in Europe for metallography!
Delivered in white cardboard box.



XPNC SIC Abrasive Papers, PLAIN, Box of 100

Ref	Ømm	Grit	Applications	Ref.N°	GW (kg)
XPNC	200	P80	All materials	30008200	1,5
XPNC	200	P120	All materials	30012200	1,2
XPNC	200	P180	All materials	30018200	1,1
XPNC	200	P240	All materials	30024200	0,9
XPNC	200	P320	All materials	30032200	0,9
XPNC	200	P400	All materials	30040200	0,9
XPNC	200	P600	All materials	30060200	0,9
XPNC	200	P800	All materials	30080200	0,9
XPNC	200	P1000	All materials	30100200	0,9
XPNC	200	P1200	All materials	30120200	0,9
XPNC	200	P2400	All materials	30240200	0,9
XPNC	200	P4000	All materials	30400200	0,9
XPNC	230	P120	All materials	30012230	1,6
XPNC	230	P180	All materials	30018230	1,3
XPNC	230	P320	All materials	30032230	1,1
XPNC	230	P800	All materials	30080230	1,1
XPNC	230	P1200	All materials	30120230	1,1
XPNC	230	P2400	All materials	30240230	1,1
XPNC	230	P4000	All materials	30400230	1,1
XPNC	250	P80	All materials	30008250	2,3
XPNC	250	P120	All materials	30012250	1,7
XPNC	250	P180	All materials	30018250	1,4
XPNC	250	P240	All materials	30024250	1,3
XPNC	250	P320	All materials	30032250	1,3
XPNC	250	P400	All materials	30040250	1,3
XPNC	250	P600	All materials	30060250	1,3
XPNC	250	P800	All materials	30080250	1,3
XPNC	250	P1000	All materials	30100250	1,3
XPNC	250	P1200	All materials	30120250	1,3
XPNC	250	P2400	All materials	30240250	1,3
XPNC	250	P4000	All materials	30400250	1,3
XPNC	300	P80	All materials	30008300	3,3
XPNC	300	P120	All materials	30012300	2,6
XPNC	300	P180	All materials	30018300	2,1
XPNC	300	P240	All materials	30024300	1,8
XPNC	300	P320	All materials	30032300	1,8
XPNC	300	P400	All materials	30040300	1,8
XPNC	300	P600	All materials	30060300	1,8
XPNC	300	P800	All materials	30080300	1,8
XPNC	300	P1000	All materials	30100300	1,8
XPNC	300	P1200	All materials	30120300	1,8
XPNC	300	P2400	All materials	30240300	1,8
XPNC	300	P4000	All materials	30400300	1,8
XPNC	305	P120	All materials	30012305	2,6
XPNC	305	P180	All materials	30018305	2,1
XPNC	305	P320	All materials	30032305	1,8
XPNC	305	P800	All materials	30080305	1,8
XPNC	305	P1200	All materials	30120305	1,8
XPNC	305	P4000	All materials	30400305	1,8

P80	P120	P180	P240	P320	P400	P600	P800	P1000	P1200	P2400	P4000
200µ	125µ	82µ	60µ	46µ	35µ	26µ	22µ	18µ	15µ	8µ	5µ

XPAC : 1 reference for 2 applications:

To use on XMAF, or as standard adhesive!

1 stock, 2 types of customers! Delivered in white box.



XPAC SIC Abrasive Papers, PSA, Box of 100

Ref	Ømm	Grit	Applications	Ref.N°	GW (kg)
XPAC	200	P80	All materials	31008200	1,8
XPAC	200	P120	All materials	31012200	1,5
XPAC	200	P180	All materials	31018200	1,4
XPAC	200	P240	All materials	31024200	1,2
XPAC	200	P320	All materials	31032200	1,2
XPAC	200	P400	All materials	31040200	1,2
XPAC	200	P600	All materials	31060200	1,2
XPAC	200	P800	All materials	31080200	1,2
XPAC	200	P1000	All materials	31100200	1,2
XPAC	200	P1200	All materials	31120200	1,2
XPAC	200	P2500	All materials	31250200	1,2
XPAC	200	P2400	All materials	31240200	1,5
XPAC	200	P4000	All materials	31400200	1,5
XPAC	250	P80	All materials	31008250	2,7
XPAC	250	P120	All materials	31012250	2,2
XPAC	250	P180	All materials	31018250	1,8
XPAC	250	P240	All materials	31024250	1,6
XPAC	250	P320	All materials	31032250	1,6
XPAC	250	P400	All materials	31040250	1,6
XPAC	250	P600	All materials	31060250	1,6
XPAC	250	P800	All materials	31080250	1,6
XPAC	250	P1000	All materials	31100250	1,6
XPAC	250	P1200	All materials	31120250	1,6
XPAC	250	P2500	All materials	31250250	1,6
XPAC	250	P2400	All materials	31240250	2,0
XPAC	250	P4000	All materials	31400250	2,0
XPAC	300	P80	All materials	31008300	3,9
XPAC	300	P120	All materials	31012300	3,1
XPAC	300	P180	All materials	31018300	3,1
XPAC	300	P240	All materials	31024300	2,4
XPAC	300	P320	All materials	31032300	2,4
XPAC	300	P400	All materials	31040300	2,4
XPAC	300	P600	All materials	31060300	2,4
XPAC	300	P800	All materials	31080300	2,4
XPAC	300	P1000	All materials	31100300	2,4
XPAC	300	P1200	All materials	31120300	2,4
XPAC	300	P2500	All materials	31250300	2,4
XPAC	300	P2400	All materials	31240300	3,0
XPAC	300	P4000	All materials	31400300	3,0
XPAC	400	P80	All materials NEW	31008400	6,2
XPAC	400	P120	All materials NEW	31012400	5,2
XPAC	400	P180	All materials NEW	31018400	4,5
XPAC	400	P320	All materials NEW	31032400	4,0
XPAC	400	P400	All materials NEW	31040400	4,0
XPAC	400	P600	All materials NEW	31060400	4,0
XPAC	400	P800	All materials NEW	31080400	3,9
XPAC	400	P1200	All materials NEW	31120400	3,9

NEW

NEW

NEW

NEW
NEW
NEW
NEW
NEW
NEW
NEW

P2500 are manufactured like other standard grains (P80 to P1200) by electrostatic deposition and orientation of the abrasive on the paper support. The P2500 have superior cutting power.

The P2400 and P4000 are manufactured by placing an abrasive emulsion on a paper backing. The P2400 and P4000 behave differently in use, and generally give better polishing quality, superior finishing. However, their price is higher. "

Ask us for products which are not present in this catalogue. We can provide, as example, Lapping Films, rolls of abrasive paper, special diameter, ..., electrostatic pads, ...



Grinding wheel for ABRAPLAN, MAPS, ... Box of 1

Ref	Ømm	Abrasive	Applications	Ref.N°	GW (kg)
X950	355	Al2O3	Fast grinding, Grit 150	33355150	7,5
X960	355	SiC	Fast grinding, Grit 150, Non-Ferrous, Titanium, ...	33355160	7,5

NEW

NEW XPZR



XPZR Zirconium Oxide Abrasive Papers, PSA, Box of 25

Ref	Ømm	Grit	Applications	Ref.N°	GW (kg)
XPZR	250	P80	All materials	31008257	1,7
XPZR	300	P80	All materials	31008307	2,5

NEW

NEW



Diamond grinding Discs, Box of 1

Ref	Ømm	Abrasive	Applications	Ref.N°	GW (kg)
XDMB	200	250µ	Very Hard Materials (Glass, ceramics, ...)	33250200	0,2
XDMB	200	125µ	Very Hard Materials (Glass, ceramics, ...)	33125200	0,2
XDMB	200	75µ	Very Hard Materials (Glass, ceramics, ...)	33075200	0,2
XDMB	200	40µ	Very Hard Materials (Glass, ceramics, ...)	33040200	0,2
XDMB	200	20µ	Very Hard Materials (Glass, ceramics, ...)	33020200	0,2
XDRB	200	30µ	Very Hard Materials (Glass, ceramics, ...)	33030200	0,2
XDRB	200	10µ	Very Hard Materials (Glass, ceramics, ...)	33010200	0,2
XDMB	250	250µ	Very Hard Materials (Glass, ceramics, ...)	33250250	0,3
XDMB	250	125µ	Very Hard Materials (Glass, ceramics, ...)	33125250	0,3
XDMB	250	75µ	Very Hard Materials (Glass, ceramics, ...)	33075250	0,3
XDMB	250	40µ	Very Hard Materials (Glass, ceramics, ...)	33040250	0,3
XDMB	250	20µ	Very Hard Materials (Glass, ceramics, ...)	33020250	0,3
XDRB	250	30µ	Very Hard Materials (Glass, ceramics, ...)	33030250	0,3
XDRB	250	10µ	Very Hard Materials (Glass, ceramics, ...)	33010250	0,3
XDMB	300	250µ	Very Hard Materials (Glass, ceramics, ...)	33250300	0,3
XDMB	300	125µ	Very Hard Materials (Glass, ceramics, ...)	33125300	0,3
XDMB	300	75µ	Very Hard Materials (Glass, ceramics, ...)	33075300	0,3
XDMB	300	40µ	Very Hard Materials (Glass, ceramics, ...)	33040300	0,3
XDMB	300	20µ	Very Hard Materials (Glass, ceramics, ...)	33020300	0,3
XDRB	300	30µ	Very Hard Materials (Glass, ceramics, ...)	33030300	0,3
XDRB	300	10µ	Very Hard Materials (Glass, ceramics, ...)	33010300	0,3

XDMB and XDRB are available with metallic backing for magnetic applications, ask for prices.



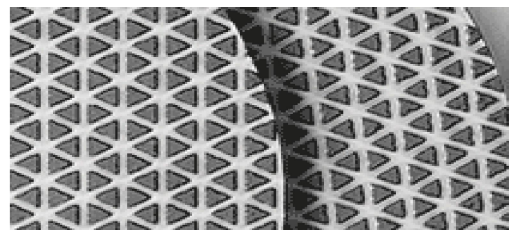
Dressing Stone for Diamond Grinding Discs, Box of 1

Ref	mm	Abrasive	Applications	Ref.N°	GW (kg)
XDDG	50x60x100	Al2O3	For XTOP, XDMB, XDRB	12900120	0,2

XTOP is a self-sharpening, flexible grinding disc for flat and fine grinding applications, replacing abrasive papers in grinding hard materials. Precision graded diamond and optimized grit concentration lead to short process time, flat surface and superior edge sharpness.

Very Hard steels, Carbides, Ceramics, ...

XTOP



XTOP Diamond grindind Discs (to use with water), **Box of 1**

Ref	Ømm	Grit	Applications	Ref.N°	GW (kg)
XTOP	200	125µ	Hard & very hard materials >200HV	34125200	0,3
XTOP	200	75µ	Hard & very hard materials >200HV	34075200	0,3
XTOP	200	54µ	Hard & very hard materials >200HV	34054200	0,3
XTOP	200	18µ	Hard & very hard materials >200HV	34018200	0,3
XTOP	250	125µ	Hard & very hard materials >200HV	34125250	0,3
XTOP	250	75µ	Hard & very hard materials >200HV	34075250	0,3
XTOP	250	54µ	Hard & very hard materials >200HV	34054250	0,3
XTOP	250	18µ	Hard & very hard materials >200HV	34018250	0,3
XTOP	300	125µ	Hard & very hard materials >200HV	34125300	0,4
XTOP	300	75µ	Hard & very hard materials >200HV	34075300	0,4
XTOP	300	54µ	Hard & very hard materials >200HV	34054300	0,4
XTOP	300	18µ	Hard & very hard materials >200HV	34018300	0,4

Ø350 and 400mm are available under request.

XMID is a new generation thin dressing disc for very hard materials. To be used with our **XM25** or **XP35**, 15, 9, or 6µ diamond suspensions. (Ceramics, very hard and treated steels, ...)

XMIF is a new generation fine polishing disc for hard materials. To be used with our diamond suspensions **XM25** or **XP35**, 9, 6 or 3µ. (Hard, Non-Ferrous and Hard Ferrous steels, ...)

1.6mm thick active surface: 3 to 4 times greater use than competitors !!



NEW XMID & XMIF

XMID/XMIF Grindind Disc (to use with diamond suspension 15, 9, 6 or 3µ), **Box of 1**

Ref	Ømm	Grit	Applications	Ref.N°	GW (kg)
XMID	200	15, 9 or 6µ	Hard & very hard materials >130HV	34200100	0,3
XMID	250	15, 9 or 6µ	Hard & very hard materials >130HV	34250100	0,4
XMID	300	15, 9 or 6µ	Hard & very hard materials >130HV	34300100	0,4
XMID	200	15, 9 or 6µ	Hard & very hard materials >130HV	34200110	0,3
XMID	250	15, 9 or 6µ	Hard & very hard materials >130HV	34250110	0,4
XMID	300	15, 9 or 6µ	Hard & very hard materials >130HV	34300110	0,4

Ø350 and 400mm are available under request.

Lubricant water soluble for Lapping



Ref	Quantity	Color	Applications	Ref.N°	GW (kg)
XL90	1L	Blond	Lubrification	45001900	1,1
XL90	5L	Blond	Lubrification	45005900	5,2
XL90	10L	Blond	Lubrification	45010900	10,3

Can be mixed with alumina powder. Can be use on XTOP or XLAP to increase cutting power.

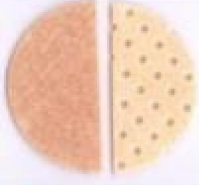









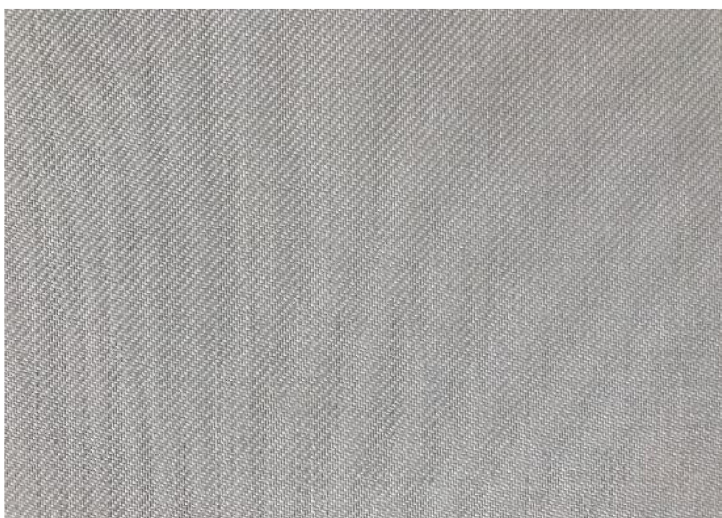
- **Monocrystalline Diamond, perfectly calibrated, ultrapure, Highest Quality**
- **Polycrystalline Diamond, perfectly calibrated, ultrapure, Highest Quality**
- **All our formulations are biodegradable and safe**
- **No substances hazardous to health and the environment**
- **Made in France in our laboratories**
- **XM25 and XP35** : water base permanent suspension, high concentration for high performance. With or without lubricant. Easy cleaning. **The most popular of our suspensions! Best value for money!**
- **XM15 and XP15** : **2in1** water base permanent suspension, for use without lubricant. Easy cleaning. **NEW FORMULA More lubricant, stays more on the cloth!**
- **XMAL and XPAL** : alcohol base suspension without water, high concentration, very high performance. Easy cleaning. **For water sensitive materials. Alcohol base: more cutting power!**
- **XMWF and XPWF** : **New permanent suspension without water, without alcohol and without oil**, very high concentration. Creamy formulation. Easy cleaning.
- **XDGM, XDPM and XDPP** : diamond pastes, very high concentration, formulation for easy cleaning of samples, very high cutting power.
- **XDOM and XDOP** : diamond pastes, very high concentration, **oil base** for **industrial** lapping and polishing.
- **XM10** : very high diamond concentration, **oil base suspension** for **industrial** lapping and polishing.

Our new unique range of High Quality Polishing Cloths



POLISHING CLOTHS

	NEW ! 	NEW ! 			Selection and production of the most efficient and performing polishing cloths for metallography and industrial polishing.
X710 X715	X620	X550	X540	X500	
High density polishing pad, for high and plan stock removal. For hard and very hard materials. (X715: perforated) 30, 15, 9 or 6µ	Non-woven polishing cloth, for plan polishing. Internal film barrier. Medium, hard and very hard materials. 15, 9, 6 or 3µ	Woven satin polishing cloth with internal barrier film. Excellent flatness and durability. Higher material removal. All materials. 15, 9, 6 or 3µ	Woven silk polishing cloth with internal barrier film and PVC foil. Good flatness. All materials. 9, 6, 3 or 1µ	Woven silk polishing cloth with internal barrier and thin adhesive film. Excellent flatness and semifinishing. All materials. 9, 6, 3 or 1µ	
	NEW ! 		NEW ! 	NEW ! 	
X300	X240	X220	X200	X100	
100% pure woven wool polishing cloth. Medium and soft materials. Semi-finishing or finishing with 3µ. 6 or 3µ	Soft flocked polishing cloth with internal barrier film. Flatness, durability and finishing. Semi-finishing and finishing of all materials. 9, 6, 3 or 1µ	Soft flocked polishing cloth. Flatness and finishing. Semi-finishing and finishing of all materials. 6, 3 or 1µ	Very soft flocked polishing cloth. Semi-finishing and finishing of all materials, with diamond or fine Alumina. 3, 1 or 1/4µ	Buffed polyurethane. Super-finishing on many materials. To use with Colloidal Silica (XA05) or extra-fine Alumina. 1 to 0,04µ	
Our adhesive polishing cloths X series are also available in a MAGNETIC version, M series, and compatible on electrostatic pads.					



Our diamond suspensions are manufactured by us in our air-conditioned laboratory at constant temperature.

They are all biodegradable.

We only use high quality diamond and perfectly calibrated.

The perfect suspension!



XM25 Monocrystalline Permanent Diamond Suspension 0,5litre

Ref	Grit	Color	Applications	Ref.N°	GW (kg)
XM25	0,25 μ	Grey	All materials	50025005	0,6
XM25	1 μ	Blue	All materials	50001005	0,6
XM25	3 μ	Green	All materials	50003005	0,6
XM25	6 μ	Yellow	All materials	50006005	0,6
XM25	9 μ	Orange	All materials	50009005	0,6
XM25	15 μ	Red	All materials	50015005	0,6

250ml under request

XM25 Monocrystalline Permanent Diamond Suspension 1litre

Ref	Taille	Couleur	Applications	Ref.N°	GW (kg)
XM25	0,25 μ	Grey	All materials	50025010	1,1
XM25	1 μ	Blue	All materials	50001010	1,1
XM25	3 μ	Green	All materials	50003010	1,1
XM25	6 μ	Yellow	All materials	50006010	1,1
XM25	9 μ	Orange	All materials	50009010	1,1
XM25	15 μ	Red	All materials	50015010	1,1

XM25 Monocrystalline Permanent Diamond Suspension 2,5litres

Ref	Taille	Couleur	Applications	Ref.N°	GW (kg)
XM25	0,25 μ	Grey	All materials	50025025	2,7
XM25	1 μ	Blue	All materials	50001025	2,7
XM25	3 μ	Green	All materials	50003025	2,7
XM25	6 μ	Yellow	All materials	50006025	2,7
XM25	9 μ	Orange	All materials	50009025	2,7
XM25	15 μ	Red	All materials	50015025	2,7

XM25 Monocrystalline Permanent Diamond Suspension 5litres

Ref	Taille	Couleur	Applications	Ref.N°	GW (kg)
XM25	0,25 μ	Grey	All materials	50025050	5,2
XM25	1 μ	Blue	All materials	50001050	5,2
XM25	3 μ	Green	All materials	50003050	5,2
XM25	6 μ	Yellow	All materials	50006050	5,2
XM25	9 μ	Orange	All materials	50009050	5,2
XM25	15 μ	Red	All materials	50015050	5,2

Our diamond suspensions are manufactured by us in our air-conditioned laboratory at constant temperature.

They are all biodegradable.

We only use high quality diamond and perfectly calibrated.

The Highest Quality !



XP35 Polycrystalline Permanent Diamond Suspension 0,5litre

Ref	Grit	Color	Applications	Ref.N°	GW (kg)
XP35	0,25µ	Black	Hard Materials, Titanium	52025005	0,6
XP35	0,50µ	Black	NEW Hard Materials, Titanium	52050005	0,6
XP35	1µ	Black	Hard Materials, Titanium	52001005	0,6
XP35	3µ	Black	Hard Materials, Titanium	52003005	0,6
XP35	6µ	Black	Hard Materials, Titanium	52006005	0,6
XP35	9µ	Black	Hard Materials, Titanium	52009005	0,6
XP35	15µ	Black	Hard Materials, Titanium	52015005	0,6

250ml under request

XP35 Polycrystalline Permanent Diamond Suspension 1litre

Ref	Grit	Color	Applications	Ref.N°	GW (kg)
XP35	0,25µ	Black	Hard Materials, Titanium	52025010	1,1
XP35	0,50µ	Black	NEW Hard Materials, Titanium	52050010	1,1
XP35	1µ	Black	Hard Materials, Titanium	52001010	1,1
XP35	3µ	Black	Hard Materials, Titanium	52003010	1,1
XP35	6µ	Black	Hard Materials, Titanium	52006010	1,1
XP35	9µ	Black	Hard Materials, Titanium	52009010	1,1
XP35	15µ	Black	Hard Materials, Titanium	52015010	1,1

XP35 Polycrystalline Permanent Diamond Suspension 2,5litres

Ref	Grit	Color	Applications	Ref.N°	GW (kg)
XP35	0,25µ	Black	Hard Materials, Titanium	52025025	2,7
XP35	1µ	Black	Hard Materials, Titanium	52001025	2,7
XP35	3µ	Black	Hard Materials, Titanium	52003025	2,7
XP35	6µ	Black	Hard Materials, Titanium	52006025	2,7
XP35	9µ	Black	Hard Materials, Titanium	52009025	2,7
XP35	15µ	Black	Hard Materials, Titanium	52015025	2,7

XP35 Polycrystalline Permanent Diamond Suspension 5litres

Ref	Grit	Color	Applications	Ref.N°	GW (kg)
XP35	0,25µ	Black	Hard Materials, Titanium	52025050	5,2
XP35	1µ	Black	Hard Materials, Titanium	52001050	5,2
XP35	3µ	Black	Hard Materials, Titanium	52003050	5,2
XP35	6µ	Black	Hard Materials, Titanium	52006050	5,2
XP35	9µ	Black	Hard Materials, Titanium	52009050	5,2
XP35	15µ	Black	Hard Materials, Titanium	52015050	5,2

New Formula!
More lubricant!
More smooth!
More concentrated!
2in1 suspension to be use without lubricant.



XM15 2en1 Monocrystalline Permanent Diamond Suspension 0,5litre

Ref	Grit	Color	Applications	Ref.N°	GW (kg)
XM15	0,25μ	Grey	All materials	51025005	0,6
XM15	1μ	Blue	All materials	51001005	0,6
XM15	3μ	Green	All materials	51003005	0,6
XM15	6μ	Yellow	All materials	51006005	0,6
XM15	9μ	Orange	All materials	51009005	0,6
XM15	15μ	Red	All materials	51015005	0,6

XM15 2en1 Monocrystalline Permanent Diamond Suspension 1litre

Ref	Grit	Color	Applications	Ref.N°	GW (kg)
XM15	0,25μ	Grey	All materials	51025010	1,1
XM15	1μ	Blue	All materials	51001010	1,1
XM15	3μ	Green	All materials	51003010	1,1
XM15	6μ	Yellow	All materials	51006010	1,1
XM15	9μ	Orange	All materials	51009010	1,1
XM15	15μ	Red	All materials	51015010	1,1

XM15 2en1 Monocrystalline Permanent Diamond Suspension 2,5litres

Ref	Grit	Color	Applications	Ref.N°	GW (kg)
XM15	0,25μ	Grey	All materials	51025025	2,7
XM15	1μ	Blue	All materials	51001025	2,7
XM15	3μ	Green	All materials	51003025	2,7
XM15	6μ	Yellow	All materials	51006025	2,7
XM15	9μ	Orange	All materials	51009025	2,7
XM15	15μ	Red	All materials	51015025	2,7

XM15 2en1 Monocrystalline Permanent Diamond Suspension 5litres

Ref	Grit	Color	Applications	Ref.N°	GW (kg)
XM15	0,25μ	Grey	All materials	51025050	5,2
XM15	1μ	Blue	All materials	51001050	5,2
XM15	3μ	Green	All materials	51003050	5,2
XM15	6μ	Yellow	All materials	51006050	5,2
XM15	9μ	Orange	All materials	51009050	5,2
XM15	15μ	Red	All materials	51015050	5,2

New Formula!
More lubricant!
More smooth!
More concentrated!
2in1 suspension to be use without lubricant.



XP15 2en1 Polycrystalline Permanent Diamond Suspension 0,5litre

Ref	Grit	Color	Applications	Ref.N°	GW (kg)
XP15	0,25μ	Black	Hard Materials, Titanium	53025005	0,6
XP15	1μ	Black	Hard Materials, Titanium	53001005	0,6
XP15	3μ	Black	Hard Materials, Titanium	53003005	0,6
XP15	6μ	Black	Hard Materials, Titanium	53006005	0,6
XP15	9μ	Black	Hard Materials, Titanium	53009005	0,6
XP15	15μ	Black	Hard Materials, Titanium	53015005	0,6

XP15 2en1 Polycrystalline Permanent Diamond Suspension 1litre

Ref	Grit	Color	Applications	Ref.N°	GW (kg)
XP15	0,25μ	Black	Hard Materials, Titanium	53025010	1,1
XP15	1μ	Black	Hard Materials, Titanium	53001010	1,1
XP15	3μ	Black	Hard Materials, Titanium	53003010	1,1
XP15	6μ	Black	Hard Materials, Titanium	53006010	1,1
XP15	9μ	Black	Hard Materials, Titanium	53009010	1,1
XP15	15μ	Black	Hard Materials, Titanium	53015010	1,1

XP15 2en1 Polycrystalline Permanent Diamond Suspension 2,5litres

Ref	Grit	Color	Applications	Ref.N°	GW (kg)
XP15	0,25μ	Black	Hard Materials, Titanium	53025025	2,7
XP15	1μ	Black	Hard Materials, Titanium	53001025	2,7
XP15	3μ	Black	Hard Materials, Titanium	53003025	2,7
XP15	6μ	Black	Hard Materials, Titanium	53006025	2,7
XP15	9μ	Black	Hard Materials, Titanium	53009025	2,7
XP15	15μ	Black	Hard Materials, Titanium	53015025	2,7

XP15 2en1 Polycrystalline Permanent Diamond Suspension 5litres

Ref	Grit	Color	Applications	Ref.N°	GW (kg)
XP15	0,25μ	Black	Hard Materials, Titanium	53025050	5,2
XP15	1μ	Black	Hard Materials, Titanium	53001050	5,2
XP15	3μ	Black	Hard Materials, Titanium	53003050	5,2
XP15	6μ	Black	Hard Materials, Titanium	53006050	5,2
XP15	9μ	Black	Hard Materials, Titanium	53009050	5,2
XP15	15μ	Black	Hard Materials, Titanium	53015050	5,2

DIAMOND SPRAY

Alcohol base

No gas

High Quality Packaging

200ml

NEW: higher concentration



XPAL Alcohol Base POLY Diamond spray

200ml

No Water

Ref	Grit	Color	Applications	Ref.N°	GW (kg)
XPAL	0,25µ	Black	Hard Materials, Titanium	52025301	0,3
XPAL	0,50µ	Black	NEW Hard Materials, Titanium	52050301	0,3
XPAL	1µ	Black	Hard Materials, Titanium	52001301	0,3
XPAL	3µ	Black	Hard Materials, Titanium	52003301	0,3
XPAL	6µ	Black	Hard Materials, Titanium	52006301	0,3
XPAL	9µ	Black	Hard Materials, Titanium	52009301	0,3
XPAL	15µ	Black	Hard Materials, Titanium	52015301	0,3

XMAL Alcohol Base MONO Diamond spray

200ml

No Water

Ref	Grit	Color	Applications	Ref.N°	GW (kg)
XMAL	0,25µ	Grey	All materials	50125001	0,3
XMAL	1µ	Blue	All materials	50101001	0,3
XMAL	3µ	Green	All materials	50103001	0,3
XMAL	6µ	Yellow	All materials	50106001	0,3
XMAL	9µ	Orange	All materials	50109001	0,3
XMAL	15µ	Red	All materials	50105001	0,3

PERMANENT DIAMOND SUSPENSION

No Water, No Oil, No Alcohol !

Easy cleaning, biodegradable, not hazardous



XMWF MONO Permanent Diamond Suspension Very High Concentration 0,5litre

Ref	Grit	Color	Applications	Ref.N°	GW (kg)
XMWF	1µ	Blue	All materials	51001105	0,6
XMWF	3µ	Green	All materials	51003105	0,6
XMWF	6µ	Yellow	All materials	51006105	0,6
XMWF	9µ	Orange	All materials	51009105	0,6

XPWF POLY Permanent Diamond Suspension Very High Concentration 0,5litre

Ref	Grit	Color	Applications	Ref.N°	GW (kg)
XPWF	1µ	Black	All materials	53001105	0,6
XPWF	3µ	Black	All materials	53003105	0,6
XPWF	6µ	Black	All materials	53006105	0,6
XPWF	9µ	Black	All materials	53009105	0,6

ALCOHOL BASE

Water sensitive materials

Very high cutting power

Easy cleaning



XMAL Alcohol Base Monocrystalline Diamond Suspension 0,5litre **No Water**

Ref	Grit	Color	Applications	Ref.N°	GW (kg)
XMAL	0,25μ	Grey	All materials	50125010	0,6
XMAL	1μ	Blue	All materials	50101010	0,6
XMAL	3μ	Green	All materials	50103010	0,6
XMAL	6μ	Yellow	All materials	50106010	0,6
XMAL	9μ	Orange	All materials	50109010	0,6
XMAL	15μ	Red	All materials	50115010	0,6

XMAL Alcohol Base Monocrystalline Diamond Suspension 1litre **No Water**

Ref	Grit	Color	Applications	Ref.N°	GW (kg)
XMAL	0,25μ	Grey	All materials	50125011	1,1
XMAL	1μ	Blue	All materials	50101011	1,1
XMAL	3μ	Green	All materials	50103011	1,1
XMAL	6μ	Yellow	All materials	50106011	1,1
XMAL	9μ	Orange	All materials	50109011	1,1
XMAL	15μ	Red	All materials	50115011	1,1



XPAL Alcohol Base Polycrystalline Diamond Suspension 0,5litre **No Water**

Ref	Grit	Color	Applications	Ref.N°	GW (kg)
XPAL	0,25μ	Black	All hard materials	52025305	0,6
XPAL	0,50μ	Black	NEW Hard Materials, Titanium	52050305	0,6
XPAL	1μ	Black	All hard materials	52001305	0,6
XPAL	3μ	Black	All hard materials	52003305	0,6
XPAL	6μ	Black	All hard materials	52006305	0,6
XPAL	9μ	Black	All hard materials	52009305	0,6
XPAL	15μ	Black	All hard materials	52015305	0,6

XPAL Alcohol Base Polycrystalline Diamond Suspension 1litre **No Water**

Ref	Grit	Color	Applications	Ref.N°	GW (kg)
XPAL	0,25μ	Black	All hard materials	52025310	1,1
XPAL	0,50μ	Black	NEW Hard Materials, Titanium	52050310	1,1
XPAL	1μ	Black	All hard materials	52001310	1,1
XPAL	3μ	Black	All hard materials	52003310	1,1
XPAL	6μ	Black	All hard materials	52006310	1,1
XPAL	9μ	Black	All hard materials	52009310	1,1
XPAL	15μ	Black	All hard materials	52015310	1,1

Our diamond pastes are manufactured by us in our air-conditioned laboratory at constant temperature. They are all biodegradable.



XDGM Monocrystalline Diamond Paste, Tube of 10gr, Standard Concentration

Ref	Grit	Color	Applications	Ref.N°	GW (kg)
XDGM	0,25µ	Grey	Soft materials, Stainless Steel	56025010	0,1
XDGM	1µ	Blue	Soft materials, Stainless Steel	56001010	0,1
XDGM	3µ	Green	Soft materials, Stainless Steel	56003010	0,1
XDGM	6µ	Yellow	Soft materials, Stainless Steel	56006010	0,1
XDGM	9µ	Orange	Soft materials, Stainless Steel	56009010	0,1
XDGM	15µ	Red	Soft materials, Stainless Steel	56015010	0,1

XDPM Monocrystalline diamond Paste, Tube of 10gr, High Concentration

Ref	Grit	Color	Applications	Ref.N°	GW (kg)
XDPM	0,25µ	Grey	Hard Materials	56025015	0,1
XDPM	1µ	Blue	Hard Materials	56001015	0,1
XDPM	3µ	Green	Hard Materials	56003015	0,1
XDPM	6µ	Yellow	Hard Materials	56006015	0,1
XDPM	9µ	Orange	Hard Materials	56009015	0,1
XDPM	15µ	Red	Hard Materials	56015015	0,1

XDPP Polycrystalline Diamond Paste, Tube of 10gr, High Concentration

Ref	Grit	Color	Applications	Ref.N°	GW (kg)
XDPP	0,25µ	Black	Hard Materials, Titanium	57025010	0,1
XDPP	1µ	Black	Hard Materials, Titanium	57001010	0,1
XDPP	3µ	Black	Hard Materials, Titanium	57003010	0,1
XDPP	6µ	Black	Hard Materials, Titanium	57006010	0,1
XDPP	9µ	Black	Hard Materials, Titanium	57009010	0,1
XDPP	15µ	Black	Hard Materials, Titanium	57015010	0,1

Our lubricants are manufactured by NX-MET. They are all biodegradable. We only use high quality ingredients.



Lubricants

Ref	Quantity	Color	Applications	Ref.N°	GW (kg)
XL20	1L	Green	Water base lubricant	45010120	1,1
XL20	2,5L	Green	Water base lubricant	45025120	2,7
XL20	5L	Green	Water base lubricant	45050120	5,2
XL20	10L	Green	Water base lubricant	45100120	10,3
XL25	1L	Red	Water base lubricant	45010125	1,1
XL25	2,5L	Red	Water base lubricant	45025125	2,7
XL25	5L	Red	Water base lubricant	45050125	5,2
XL25	10L	Red	Water base lubricant	45100125	10,3
XL22	1L	Orange	Water & Alcohol base lubricant	45010122	1,1
XL22	2,5L	Orange	Water & Alcohol base lubricant	45025122	2,7
XL22	5L	Orange	Water & Alcohol base lubricant	45050122	5,2
XL22	10L	Orange	Water & Alcohol base lubricant	45100122	10,3
XL50	1L	Blue	Alcohol base lubricant More cutting power!	45010150	1,0
XL50	2,5L	Blue	Alcohol base lubricant More cutting power!	45025150	2,6
XL50	5L	Blue	Alcohol base lubricant More cutting power!	45050150	5,1
XL50	10L	Blue	Alcohol base lubricant More cutting power!	45100150	10,2

High performance polishing cloths!

Polishing Cloth Discs, PSA, Pck of 5



Ref	Ømm	Color	Applications	Ref.N°	GW (kg)
X620	200	Cream	Non woven Diamond 15, 9, 6µ	40200620	0,2
X550	200	Grey	Woven Diamond 15, 9, 6µ	40200550	0,2
X540	200	White	Woven (PVC intermediate layer) Diamond 9, 6µ	40200540	0,2
X500	200	White	Woven Diamond 9, 6, 3µ	40200500	0,2
X300	200	White	Woven wool Diamond 6, 3, 1µ	40200300	0,2
X240	200	Purple	Flocked Soft Diamant 9, 6, 3, 1µ	40200240	0,2
X220	200	Blue	Flocked Soft Diamond 6, 3, 1µ	40200220	0,2
X200	200	Red	Flocked Extra-Soft Diamant 3, 1, 1/4µ	40200200	0,2
X100	200	Black	Microporous Alumina or Colloidal Silica	40200100	0,2
X620	250	Cream	Non woven Diamond 15, 9, 6µ	40250620	0,2
X550	250	Grey	Woven Diamond 15, 9, 6µ	40250550	0,2
X540	250	White	Woven (PVC intermediate layer) Diamond 9, 6µ	40250540	0,2
X500	250	White	Woven Diamond 9, 6, 3µ	40250500	0,2
X300	250	White	Woven wool Diamond 6, 3, 1µ	40250300	0,2
X240	250	Purple	Flocked Soft Diamant 9, 6, 3, 1µ	40250240	0,2
X220	250	Blue	Flocked Soft Diamond 3, 1µ	40250220	0,2
X200	250	Red	Flocked Extra-Soft Diamant 3, 1µ	40250200	0,2
X100	250	Black	Microporous Alumina or Colloidal Silica	40250100	0,2
X620	300	Cream	Non woven Diamond 15, 9, 6µ	40300620	0,3
X550	300	Grey	Woven Diamond 15, 9, 6µ	40300550	0,3
X540	300	White	Woven (PVC intermediate layer) Diamond 9, 6µ	40300540	0,3
X500	300	White	Woven Diamond 9, 6, 3µ	40300500	0,3
X300	300	White	Woven wool Diamond 6, 3, 1µ	40300300	0,3
X240	300	Purple	Flocked Soft Diamant 9, 6, 3, 1µ	40300240	0,3
X220	300	Blue	Flocked Soft Diamond 3, 1µ	40300220	0,3
X200	300	Red	Flocked Extra-Soft Diamant 3, 1µ	40300200	0,3
X100	300	Black	Microporous Alumina or Colloidal Silica	40300100	0,3

Polishing Cloth Discs M, pck of 5 (For Magnetic, GEKKO, ...)

Ref	Ømm	Color	Applications	Ref.N°	GW (kg)
M620	200	Cream	Non woven Diamond 15, 9, 6µ	41200620	0,4
M550	200	Grey	Woven Diamond 15, 9, 6µ	41200550	0,4
M540	200	White	Woven (PVC intermediate layer) Diamond 9, 6µ	41200540	0,4
M500	200	White	Woven Diamond 9, 6, 3µ	41200500	0,4
M300	200	White	Woven wool Diamond 6, 3, 1µ	41200300	0,4
M240	200	Purple	Flocked Soft Diamant 9, 6, 3, 1µ	41200240	0,4
M220	200	Blue	Flocked Soft Diamond 6, 3, 1µ	41200220	0,4
M200	200	Red	Flocked Extra-Soft Diamant 3, 1, 1/4µ	41200200	0,4
M100	200	Black	Microporous Alumina or Colloidal Silica	41200100	0,4
M620	250	Cream	Non woven Diamond 15, 9, 6µ	41250620	0,6
M550	250	Grey	Woven Diamond 15, 9, 6µ	41250550	0,6
M540	250	White	Woven (PVC intermediate layer) Diamond 9, 6µ	41250540	0,6
M500	250	White	Woven Diamond 9, 6, 3µ	41250500	0,6
M300	250	White	Woven wool Diamond 6, 3, 1µ	41250300	0,6
M240	250	Purple	Flocked Soft Diamant 9, 6, 3, 1µ	41250240	0,6
M220	250	Blue	Flocked Soft Diamond 3, 1µ	41250220	0,6
M200	250	Red	Flocked Extra-Soft Diamant 3, 1µ	41250200	0,6
M100	250	Black	Microporous Alumina or Colloidal Silica	41250100	0,6
M620	300	Cream	Non woven Diamond 15, 9, 6µ	41300620	0,9
M550	300	Grey	Woven Diamond 15, 9, 6µ	41300550	0,9
M540	300	White	Woven (PVC intermediate layer) Diamond 9, 6µ	41300540	0,9
M500	300	White	Woven Diamond 9, 6, 3µ	41300500	0,9
M300	300	White	Woven wool Diamond 6, 3, 1µ	41300300	0,9
M240	300	Purple	Flocked Soft Diamant 9, 6, 3, 1µ	41300240	0,9
M220	300	Blue	Flocked Soft Diamond 3, 1µ	41300220	0,9
M200	300	Red	Flocked Extra-Soft Diamant 3, 1µ	41300200	0,9
M100	300	Black	Microporous Alumina or Colloidal Silica	41300100	0,9

A new range of Colloidal Silica
High super-finishing on all materials!!
New Alumina Cream !!
Neutral ph, stay wet

(can also be used on vibratory polishing machine)



Colloidal Silica Suspension (with anticrystallization agent)

Ref	Grit	Quantity	Applications		Ref.N°	GW (kg)
XA05	0,05µ Basic	1 Litre	White	Super Finishing	36005101	1,4
XA05	0,05µ Basic	2,5 Litres	White	Super Finishing	36005125	3,4
XA05	0,05µ Basic	5 Litres	White	Super Finishing	36005150	6,7
XA15	0,15µ Basic	1 Litre	Pink	Super Finishing (more aggressive)	36120101	1,4
XA15	0,15µ Basic	2,5 Litres	Pink	Super Finishing (more aggressive)	36120125	3,4
XA15	0,15µ Basic	5 Litres	Pink	Super Finishing (more aggressive)	36120150	6,7

Colloidal Silica Suspension + Al2O3 (with anticrystallization agent)

Ref	Grain	Quantity	Applications		Ref.N°	GW (kg)
XA06	0,05µ Basic	1 Litre	Blue	Super Finishing for Ferrous Materials NEW	36005201	1,4
XA06	0,05µ Basic	5 Litres	Blue	Super Finishing for Ferrous Materials NEW	36005250	6,7

XALO Alumina Cream, Bottle of 1 litre **NEW**



Ref	Grit	Quality	Applications		Ref.N°	GW (kg)
XALO	0,04µ	Gamma	Green	Super Finishing Neutral pH	36004220	1,5
XALO	0,3µ	Alpha	Pink	Super Finishing Neutral pH	36030220	1,5
XALO	1µ	Alpha	Blue	Super Finishing Neutral pH	36010220	1,5

NEW
NEW
NEW

XALO Alumina Smooth Suspensions with lubricant, Bottle of 1 litre **NEW**

Ref	Grit	Quality	Applications		Ref.N°	GW (kg)
XALO	0,04µ	Gamma	Green	Super Finishing Higher concentration, slower dry	36004210	1,4
XALO	0,3µ	Alpha	Pink	Super Finishing Higher concentration, slower dry	36030210	1,4
XALO	1µ	Alpha	Blue	Finishing Higher concentration, slower dry	36010210	1,4

NEW
NEW
NEW

XALO Alumina Suspensions standard water based, Bottle of 1 litre

Ref	Grit	Quality	Applications		Ref.N°	GW (kg)
XALO	0,04µ	Gamma	Super Finishing		36004200	1,3
XALO	0,3µ	Alpha	Super Finishing		36030200	1,3
XALO	1µ	Alpha	Finishing		36010200	1,3

XALO Alumina Powder

Ref	Grit	Quality	Applications		Ref.N°	GW (kg)
XALO	0,04µ	Gamma	Super Finishing Box of 1kg		35004100	1,1
XALO	0,3µ	Alpha	Super Finishing, Box of 1kg		35003100	1,1
XALO	1µ	Alpha	High Finishing, Box of 1kg		35100100	1,1
XALO	1µ	Standard	Finishing, Box of 1kg		35010100	1,1
XALO	3µ	Standard	Semi Finishing, Box of 1kg		35030100	1,1
XALO	5µ	Standard	Semi Finishing, Box of 1kg		35050100	1,1
XALO	9µ	Standard	Lapping, Box of 1kg		35090100	1,1
XALO	15µ	Standard	Lapping, Box of 1kg		35150100	1,1
XALO	30µ	Standard	Lapping, Box of 1kg		35300100	1,1



Portable polishing unit Electer E-MAX EVO

	Ref.N°	GW (kg)
Electer E-MAX EVO	85000100	-
Delivered in Aluminium case with 1 motor ENK-250T, 1 Reducer RG01, 1 Tool holder 90° IC300, 1 rubber disc holder Ø30mm, 1 set of polishing cloth Ø32mm (10x X500, 10x X300 & 10x X200)		
Motor ENK-250T + power cord	85000105	-
Motor ENK-410S + power cord	85000106	-
Straight tool holder IH300	85000110	-
90° tool holder IC300	85000111	-
Reducer 1/4 RG01	85000115	-
Rubber disc holder Ø30mm (x5 units)	85000120	-

Consumables for Replica

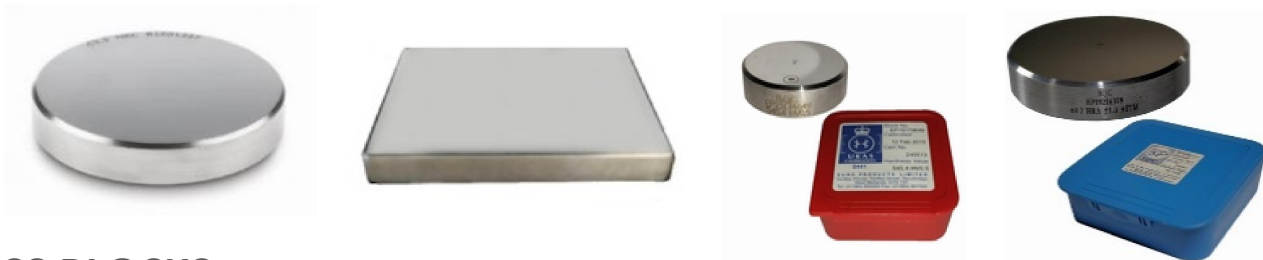
Ref	Ref.N°	GW (kg)
XREP Replica sheets 100x150mm, thickness 35µ, Pack of 20	27700120	0,1
XREP Liquid for Replica sheets, Bottle of 250ml	27700122	0,3
XREP Glass cover 30x45mm, T 0,13mm, Pack of 100	27700135	0,1
XREP Glass slides 30x45mm, T 1,2mm, Pack of 100	27700130	0,4
XREP Applicator		0,3
XREP Replica paste for horizontale & inclined surface, Tube of 50ml		0,1
XREP Static mixer, Pack of 30		0,2
XPAC Abrasive discs PSA, Ø32mm, P60, Pck de 100		0,2
XPAC Abrasive discs PSA, Ø32mm, P120, Pck de 100		0,2
XPAC Abrasive discs PSA, Ø32mm, P240, Pck de 100		0,2
XPAC Abrasive discs PSA, Ø32mm, P400, Pck de 100		0,2
XPAC Abrasive discs PSA, Ø32mm, P600, Pck de 100		0,2
XPAC Abrasive discs PSA, Ø32mm, P1200, Pck de 100		0,2

Ref	Ømm	Couleur	Applications	Ref.N°	GW (kg)
X500	32	White	Diamond 9, 6, 3µ Pack of 25	40032500	0,2
X300	32	White	Diamond 6, 3, 1µ Pack of 25	40032600	0,2
X200	32	Red	Diamond 3, 1µ Pack of 25	40032200	0,2



Ultrasonic cleaning tank (delivered with cover and basket)

Ref	Capacité (litre)	Heating	Int. Dim. (mm)	Ref.N°	GW (kg)
XU01	0,8	No	190x85x60	85100101	-
XU02	1,75	No	151x137x100	85100102	-
XU03	2,75	Yes	240x137x100	85100103	-
XU04	4,25	Yes	240x137x150	85100104	-
XU06	5,75	Yes	300x151x150	85100106	-
XU07	6,9	Yes	505x137x100	85100107	-
XU08	9,4	Yes	505x137x150	85100108	-
XU10	9,5	Yes	300x240x150	85100110	-
XU12	12,75	Yes	300x240x200	85100112	-
XU18	18	Yes	327x300x200	85100118	-
XU30	28	Yes	505x300x200	85100130	-
XU45	45	Yes	500x300x300	85100145	-
XU90	90	Yes	600x500x300	85100190	-



HARDNESS BLOCKS

Ref	Sizes	Hardness	Designation (Example)	Ref.N°	Ask for price
HV	Ø65x15mm	to specify	Block MACRO-VICKERS (HV2 700HV UKAS)	60000xxx	
HVM	Ø30x10mm	to specify	Block MICRO-VICKERS (HV0,3 550HV UKAS)	60000xxx	
HRB	Ø65x15mm	to specify	Block MICRO-KNOOP	60000xxx	
HRC	Ø65x15mm	to specify	Block ROCKWELL	60000xxx	
HRC	Ø65x15mm	to specify	Block ROCKWELL	60000xxx	
HRB	150x125x18mm	to specify	Block BRINELL	60000xxx	

Normes: (MACRO-VICKERS ASTM E384, ISO 6507), (MICRO-VICKERS ASTM E384, ISO 6507), (KNOOP ASTM E92, ISO 4545), (BRINELL ASTM E10, ISO 6506-3), (ROCKWELL ASTM E18-A4, ISO6508)

Certification UKAS: +40,00€,
Standard delivery: about 5-6 weeks.



INDENTER DIAMOND & BALL

Specify with all necessary precisions the type you need and we will give our best offer.

MICROMETER OBJECT for reflected light,
with Serial Number.
Packed in wooden box.



OBJECT MICROMETER

PS78	76x26mm	Scale 1/0,01mm	60100xxx		
PS1R	76x26mm	Scale 10/0,1mm	60100xxx		
PS5R	76x26mm	Scale 20/0,01mm	60100xxx		
UKAS		Certification UKAS for 1 micrometer			

ACCESSORIES for MACHINES

NX-MET is able to provide standard accessories for machines:

Kopal clamping system
(lower prices than competitors!)



Filter for Struers cutting machine



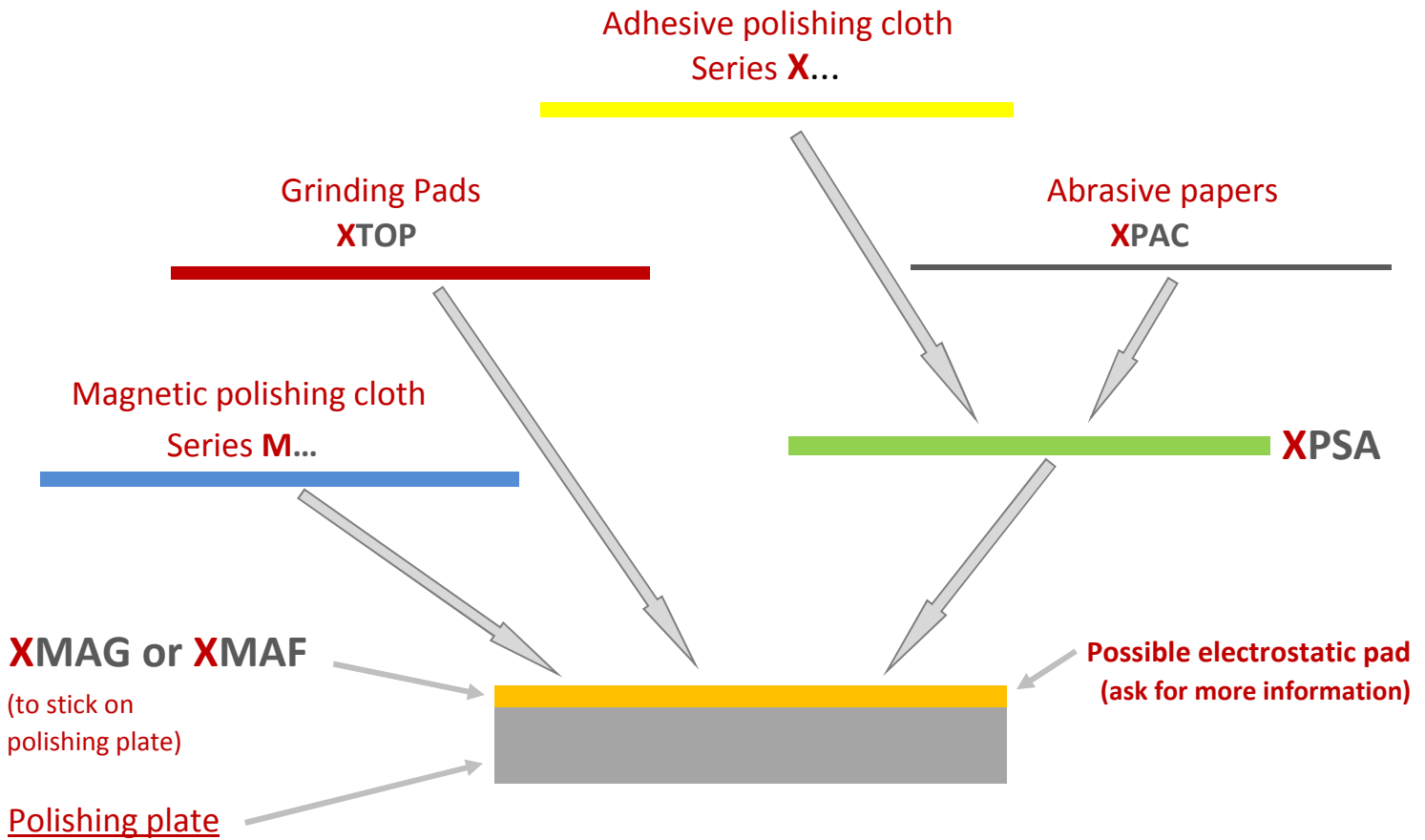
Vices for cutting machines

MACHINES: Ask for quotation



MAGNETIC or MAF SYSTEM by

How to simplify and speed up samples preparation?



With our high quality products, simplify and speed up your samples preparation by using magnetic system.

Only 1 polishing plate is necessary.

Stick on it our **XMAG / XMAF**, and then you can use all types of consumables.

Either directly on **XMAG / XMAF** with series **M** polishing cloths, grinding pads **XTOP**

or

all others adhesive products like abrasive papers **XPAC**, series **X** polishing cloths, standard diamond pads, ... by using intermediate metallic foil **XPSA**.



Your local reseller:

